

ANBEA® Premium Safe NEXT



現代精緻設計

- 時尚圖案配以獨特設計的面板
- 滑動門蓋隱藏面板

寬敞的機箱設計

- 更大的實用空間
- 可調式層板
- 高貴的抽屜飾面

優秀的防火防盜功能

- 1小時耐火性能(NT FIRE 017) MTC : D120616
- 隔煙隔熱機身 60Min under NT FIRE017
- 鋼筋鎖緊螺栓 RSC in Security by UL1037
- 重點位置強化防鑽設計

數碼鎖面板



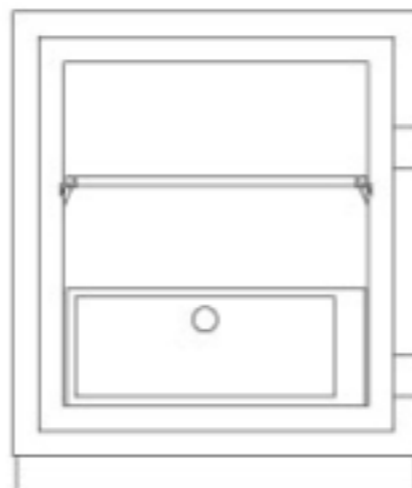
- FND顯示面板
- 4至16位自訂密碼
- 密碼和聲音隱藏功能
- 密碼顯示隨機跳轉(防偷窺)
- 防盜癱瘓功能
- 雙重控制功能
- 內置警報鐘
- 低電量提醒

香港新界屯門河田街7-9號冠華鏡廠第六工業大廈第二座6樓全層
6/F, Block 2, Koon Wah Mirror Factory(6th) Industrial Building, 7-9 Ho Tin Street, Tuen Mun, N.T., HK
Tel: (852)2690 0221 Fax: (852)2690 0217 Email: info@anbea.com.hk

Find us on **facebook**

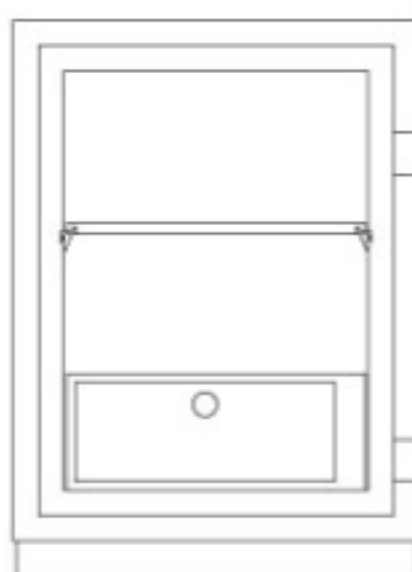


ANBEA® Premium Safe **NEXT** is a next generation safe and suitable for both at home and in the office



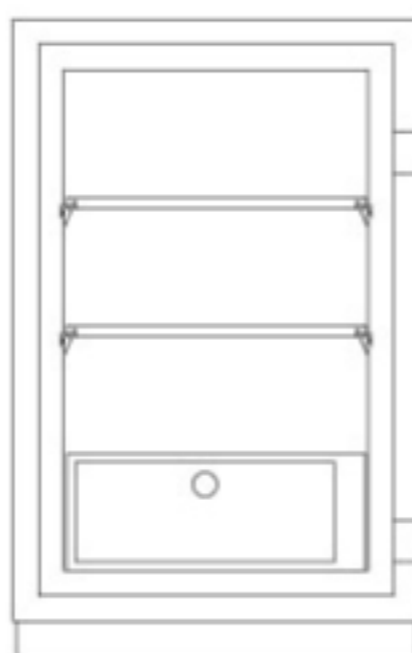
DPS5500

外尺寸 Exterior	H600 x W500 x D555 (mm) H23.5 x W19.6 x D21.7 (in)
內尺寸 Interior	H430 x W380 x D320 (mm) H17 x W15 x D12.5 (in)
重量 Weight	115 kg
容量 Capacity	52.2 L
層板 Shelf	1 pc
抽屜 Drawer	1 pc



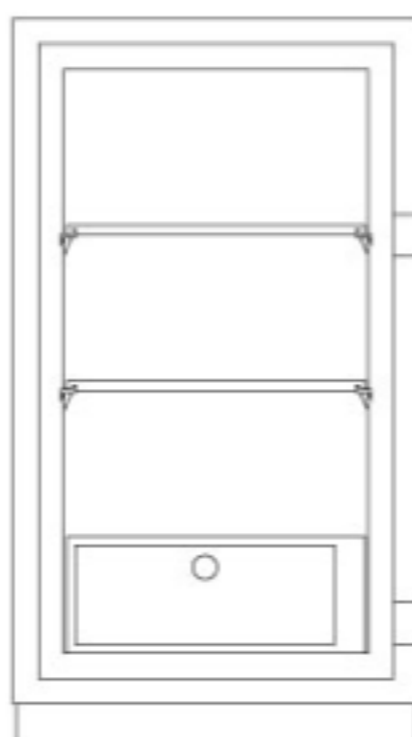
DPS6500

外尺寸 Exterior	H700 x W500 x D555 (mm) H27.5 x W19.6 x D21.7 (in)
內尺寸 Interior	H530 x W380 x D320 (mm) H21 x W15 x D12.5 (in)
重量 Weight	130 kg
容量 Capacity	64.4 L
層板 Shelf	1 pc
抽屜 Drawer	1 pc



DPS7500

外尺寸 Exterior	H800 x W500 x D555 (mm) H31.4 x W19.6 x D21.7 (in)
內尺寸 Interior	H630 x W380 x D320 (mm) H24.7 x W15 x D12.5 (in)
重量 Weight	145 kg
容量 Capacity	76.6 L
層板 Shelf	2 pcs
抽屜 Drawer	1 pc



DPS8500

外尺寸 Exterior	H900 x W500 x D555 (mm) H35.4 x W19.6 x D21.7 (in)
內尺寸 Interior	H730 x W380 x D320 (mm) H28.6 x W15 x D12.5 (in)
重量 Weight	160 kg
容量 Capacity	88.7 L
層板 Shelf	2 pcs
抽屜 Drawer	1 pc